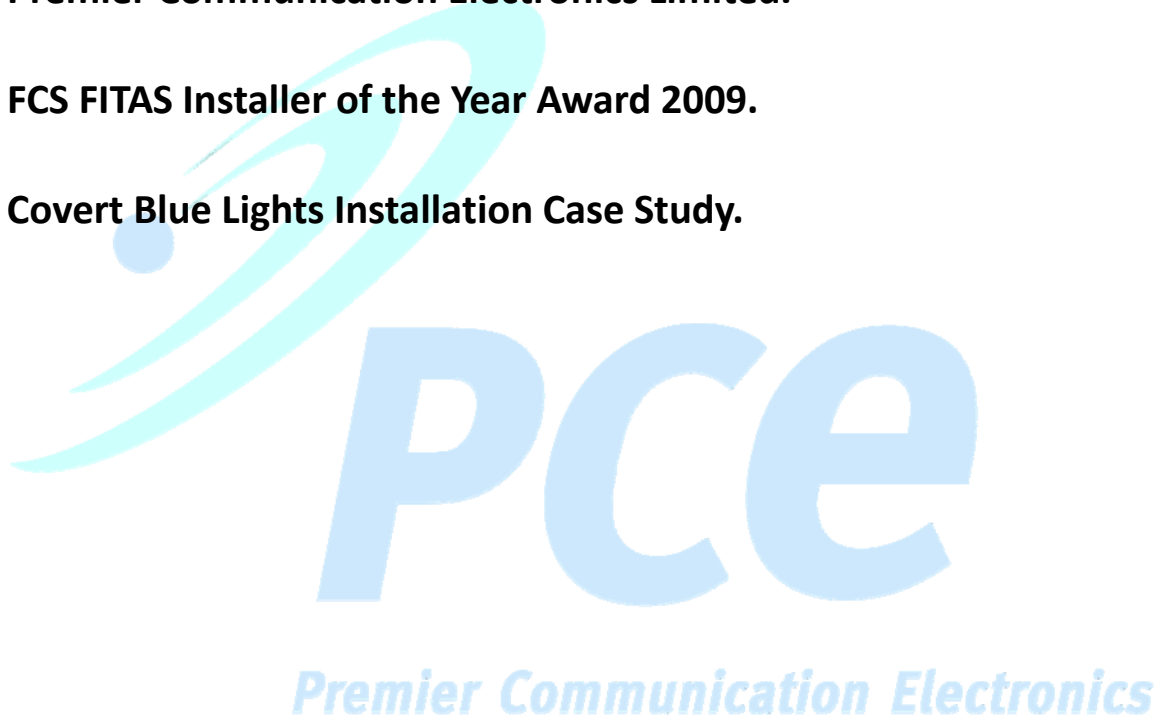


**Premier Communication Electronics Limited.**

**FCS FITAS Installer of the Year Award 2009.**

**Covert Blue Lights Installation Case Study.**



## Contents

Premier Communication Electronics Limited.....	1
FCS FITAS Installer of the Year Award 2009.....	1
Covert Blue Lights Installation Case Study.Contents.....	1
Contents.....	2
1.0 Introduction .....	3
2.0 Preface .....	3
2.1 The Vehicles .....	3
2.2 The Equipment.....	3
3.0 The Challenge.....	3
4.0 The Solution .....	4
5.0 Evidence .....	4
5.1 Volkswagen Sirocco [2008] .....	4
Figure 1. VW Sirocco Headlight Cluster install.....	4
Figure 2. VW Sirocco Front Bumper Grill (lower) LED's.....	5
Figure 3 & 4. VW Sirocco Relay control equipment. ....	5
5.2 Mazda 6 [2009] .....	6
Figure 5. Mazda 6 All Lights. ....	6
Figure 6 & 7. Mazda 6 Flashing Brake Lights .....	6
5.3 Land Rover – Discovery 3.....	7
Figure 7,8,9 & 10 Discovery Lights/Sirens Control Relays Etc .....	7
Figure 11 & 12. Land Discovery Rear Light Cluster access compartment. ....	7
6.0 Conclusion.....	8

## **1.0 Introduction**

The following case study describes the installation service carried out by Premier Communication Electronics Limited on covert blue lights & sirens as well as communication equipment installed on Ambulance Service Trust officer vehicles.

## **2.0 Preface**

### **2.1 The Vehicles**

The client vehicles are selected by the clients themselves (within budgetary constraints) i.e. they are not defined by a fleet model or design, therefore are varying in model and manufacturer. A sample list of some of the vehicles is as follows.

- i. Volvo – V50
- ii. Mazda – 6
- iii. Volkswagen – Sirocco
- iv. BMW – M5
- v. BMW – 3 series
- vi. Skoda – Octavia VRS
- vii. Landrover – Discovery 3
- viii. Volkswagen – Golf
- ix. Vauxhall – Astra

### **2.2 The Equipment**

A range of Blue light products are used including Woodway, Whelen and RSG

## **3.0 The Challenge**

To ensure a consistent and high quality install of equipment throughout these vehicle models that is standards compliant, safe and has exceptional performance.

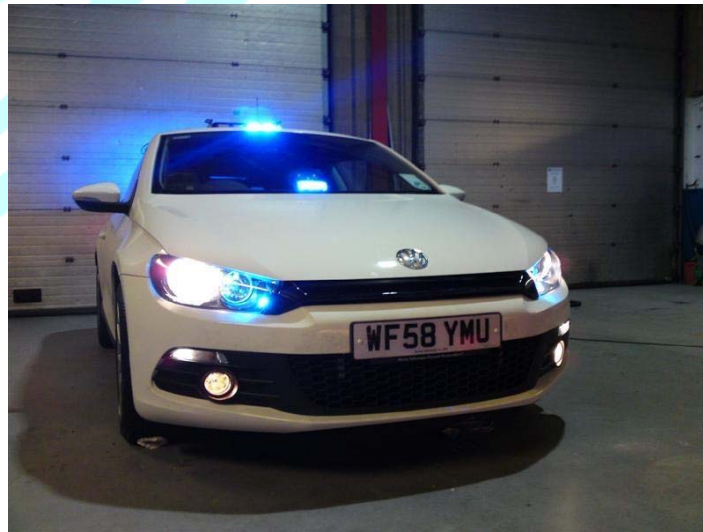
## 4.0 The Solution

Every installation is approached with the FCS 1362 as a bible however the installations of the all the vehicles undertaken is positive to exceed them. Each vehicle install is taken on with the same goal:- Achieve the best possible install (within the requirements of the customer), without any adverse affect on vehicle performance, usability and appearance.

## 5.0 Evidence

The following is photo graphic evidence of the quality of our installs.

### 5.1 Volkswagen Sirocco [2008]



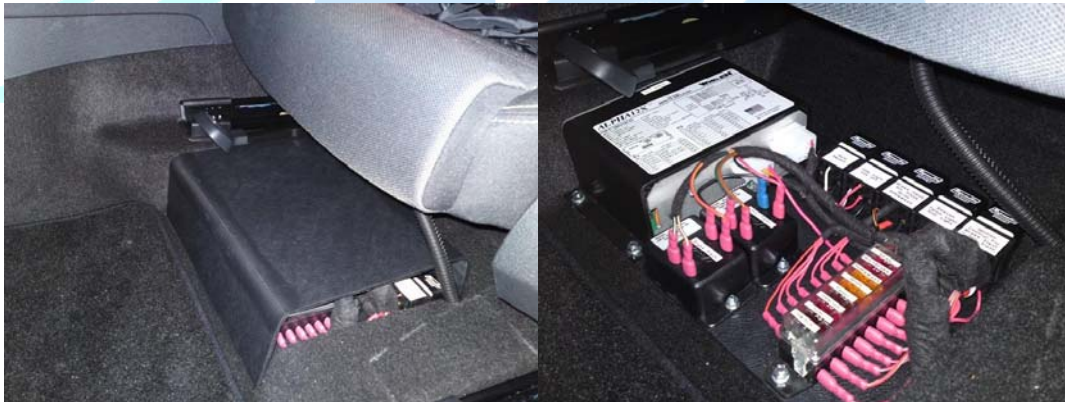
**Figure 1. VW Sirocco Headlight Cluster install.**

Figure one shows the installation of Blue LED's installed within headlight clusters to replace Blue LED's that would normally be installed on the Front Bumper Grill (Upper).



**Figure 2. VW Sirocco Front Bumper Grill (lower) LED's**

Figure 2. Shows the careful installation of Front Bumper Grill LEDs and Front Fog Light Flash, noticing the difference in Figure 1 and Figure 2 all front LED's when inactive are unnoticeable.



**Figure 3 & 4. VW Sirocco Relay control equipment.**

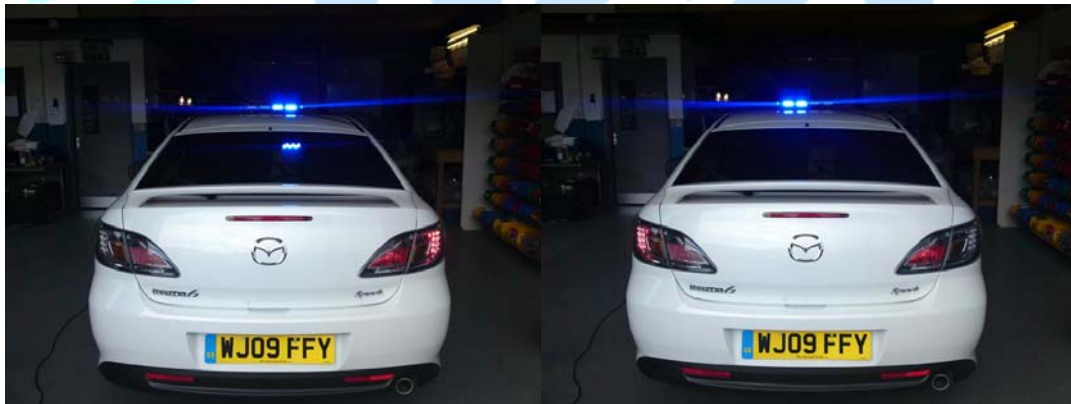
Figure 3 & 4 depict the installation of the Blue Light relay/fusing and siren PA under the front Passenger seat due to lack of space within the Sirocco an alternative location could not be found. To prevent physical interference with this equipment a custom Plastic cover is fabricated.

## 5.2 Mazda 6 [2009]



**Figure 5. Mazda 6 All Lights.**

Due to the design of the Mazda 6 Blue LED's could not be installed in the Headlight cluster's therefore Front fog lights are used – Figure 5.



**Figure 6 & 7. Mazda 6 Flashing Brake Lights**

Figure 6 & 7 show the flashing brake light LED's – used as extra warning lights when vehicle is on scene, only enable when vehicle handbrake is applied.

### 5.3 Land Rover – Discovery 3



**Figure 7,8,9 & 10 Discovery Lights/Sirens Control Relays Etc**

Figure 7-10 Show the construction of a custom designed folding mount for the Relays/Fuses and Optilink system. Finished in matching vehicle carpet and shaped to fit within the Rear Light cluster access compartment – Figure 11 & 12



**Figure 11 & 12. Land Discovery Rear Light Cluster access compartment.**

## **6.0 Conclusion**

Customer satisfaction as never been higher, a combination of a professional approach and tremendous pride in our work ensures all installs are carried out to the exceptionally high standard expected from Premier Communication Electronics Limited.

